

# State of Wyoming Corner Record

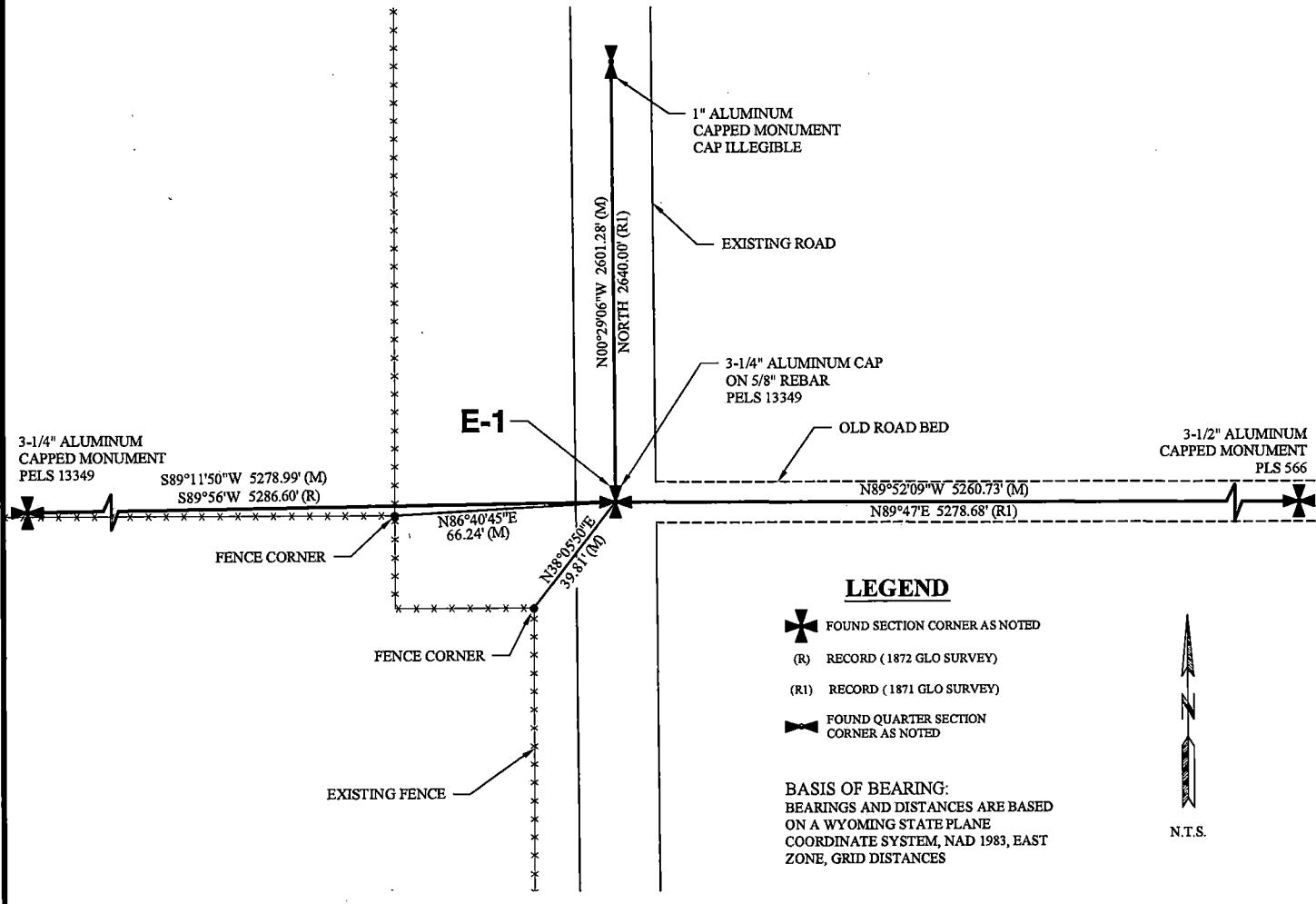
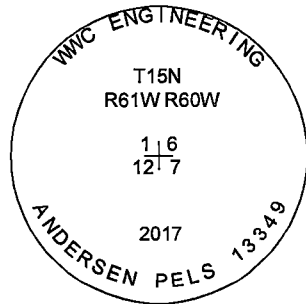
(In compliance with the CORNER PERPETUATION AND FILING ACT, Wyoming Statutes, 1997, Section 33-29-140, et seq., and the Rules and Regulations of the Board of Registration for Professional Engineers and Professional Land Surveyors)

Reverse side of this form may be used if more space is needed.

Record of original survey and citation of source of historical information (if corner is lost or obliterated.) Description of corner monumentation evidence found and/or monument and accessories established to perpetuate the location of this corner. Sketch of relative location of monument, accessories, and reference points with course and distance to adjacent corner(s) (if determined in this survey). Method and rationale for reestablishment of lost or obliterated corner.

**EVIDENCE RECORD:** 1871 GLO Survey: North along the east boundary of section 12, 80.00 chains. Set a granite boulder 16"x10"x7" for corner to sections 1, 12, 6 & 7.

**EVIDENCE FOUND:** September 2017: Granite boulder from 1871 GLO survey not found. Found a bent rebar 1" below road surface at intersection of north-south road and fence extending west. Accepted position of rebar as best available evidence for the corner to sections 1, 12, 6 & 7. Removed bent rebar and set a 3/4" aluminum cap marked as shown on a 5/8" rebar, 24" long, 6" below road surface.



**LEGEND**

- FOUND SECTION CORNER AS NOTED
- (R) RECORD (1872 GLO SURVEY)
- (R1) RECORD (1871 GLO SURVEY)
- FOUND QUARTER SECTION CORNER AS NOTED

**BASIS OF BEARING:**  
BEARINGS AND DISTANCES ARE BASED ON A WYOMING STATE PLANE COORDINATE SYSTEM, NAD 1983, EAST ZONE, GRID DISTANCES



Date of Field Work: September 21, 2017

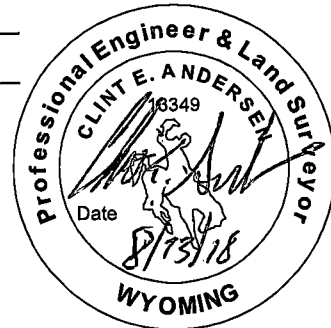
Office Reference: 2017-135

## CROSS INDEX DIAGRAM

	1	2	3	4	5	6	7	8	9	10	11	12	13	14	15	16	17	18	19	20	21	22	23	24	25
A																									
B																									
C		6																							
D																									
E																									
F																									
G			7																						
H																									
J																									
K																									
L																									
M			18																						
N																									
O																									
P																									
Q			19																						
R																									
S																									
T																									
U			30																						
V																									
W																									
X																									
Y			31																						
Z																									
	1	2	3	4	5	6	7	8	9	10	11	12	13	14	15	16	17	18	19	20	21	22	23	24	25

Land Surveyor / Firm / Address  
Clint E. Andersen  
WWC Engineering  
51 N. 15th Street, Suite 1  
Billings, MT 59101  
 Telephone: (406) 894-2210

This corner record was prepared by me or under my direction and supervision.  
 SEAL & SIGNATURE



Corner Name: Southwest Corner Section: 6 T 15N R 60W : 6TH P.M. Cross-Index No.: E-1  
 SBRPEPLS/PLSW: March 1994; PLSW January 1998